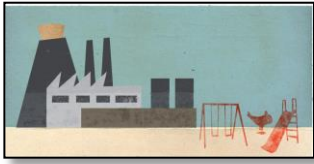


2017 Whitney and Anna Harris Conservation Forum



Environmental Justice
Thursday, November 9, 2017
The Living World, Saint Louis Zoo
5:15 p.m. Registration and Exhibit Viewing



Session 1: 5:45-6:15 p.m.

"Applying Ecological Principles to Social Design."

Pandora Thomas, Ecological Designer, Teacher and Bridgebuilder

Pandora Thomas is a passionate global citizen who works as a caregiver for her mother and globally as a teacher, writer, designer, and speaker with over 25 years of experience. As a presenter both domestically and internationally, she has given keynotes and lectures on topics ranging from diversity, social justice, youth and women's leadership, social entrepreneurship, permaculture and sustainability. Pandora's work emphasizes the benefits of applying ecological principles to social design. She is currently a designer, teacher, and facilitator at several permaculture and ecological design schools and programs.

6:15-6:45 p.m.

"The Use of Community-Engaged Research to Understand and Address Environmental Justice Issues and Related Health Disparities."

Sacoby Wilson, PhD., University of Maryland

Dr. Sacoby Wilson is an Associate Professor in Environmental Health at the School of Public Health, University of Maryland-College Park. He has over fifteen years of experience working in partnership with community-based organizations on understanding and addressing environmental justice and health issues including the West End Revitalization Association (WERA) in Mebane, NC, Low Country Alliance for Model Communities (LAMC) in North Charleston, SC, and the BTB Coalition in Brandywine, MD. He directs the Program on Community Engagement, Environmental Justice, and Health (CEEJH) at UMD-College Park which engages communities and advocacy groups in the Washington, DC region on environmental health issues.



Light Dinner and Exhibit Viewing: 6:45 -7:30 p.m.



Session 2: 7:30-8:00 p.m.

"Environmental Justice: Connections to Criminology."

Carole Gibbs, Ph.D., Michigan State University

Dr. Carole Gibbs is an associate professor at Michigan State University in the School of Criminal Justice. Her research interests include corporate and white-collar crimes (particularly those that harm the environment), race and crime, and environmental justice. She is one of the founding members of the Conservation Criminology research framework and certificate program. Recent publications appear in the Journal of Criminal Law and Criminology and Law and Policy.

8:00-8:30 p.m.

"Upholding the Beloved Community: Advancing a Just Transition to a Sustainable Planet for ALL."

Jacqueline Patterson, Director NAACP Environmental and Climate Justice Program

Jacqueline Patterson has served as coordinator & co-founder of Women of Color United since 2007. She has worked as a researcher, program manager, coordinator, advocate and activist working on women's rights, violence against women, HIV&AIDS, racial justice, economic justice, and environmental and climate justice. She served as a Senior Women's Rights Policy Analyst for ActionAid where she integrated a women's rights lens for the issues of food rights, macroeconomics, and climate change. Some of the organizations she currently serves with include the Interfaith Moral Action on Climate, Institute of the Black World, and the US Climate Action Network.



Panel Discussion: 8:30-9:00 p.m.

Event is free and open to the public, but registration is required: Call: (314)-516-4246, or email: johnsa@umsl.edu

Co-sponsored by: **Whitney R. Harris World Ecology Center**, University of Missouri-St. Louis, Missouri Botanical Garden, Saint Louis Zoo, and the Academy of Science-St. Louis.